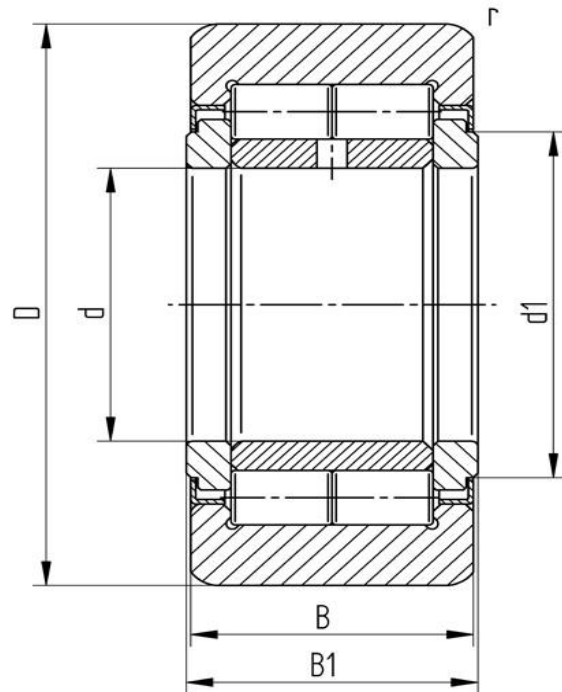


## Data sheet

### Support roller NUTR 30 72 (crowned, with axial guidance, labyrinth seal)

Designation	NUTR 30 72
Type	crowned
D [mm]	72
d [mm]	30
d1 [mm max.]	38
B1 [mm]	29
B [mm]	28
r [mm]	1
r1 [mm]	0,3
Dynamic load Crw[N]	48000
Static load	65000
Speed limit [min-1]	2600



Every specification has been edited and verified carefully. STI Bearings GmbH assumes no liability for potential errors or incompleteness. Technical modifications are subject of changes.  
© 2020 by STI Bearings GmbH  
Reproduction, even excerpts, only with our approval.